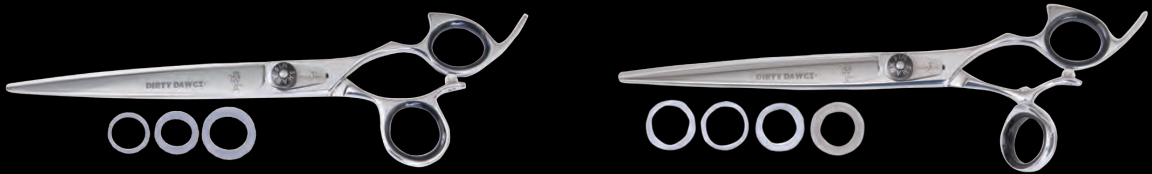




DIRTY DAWGZ® & GREAT WHITES®

## **DIRTY DAWGZ®**...for your Dirty Dogs!

Our Dirty Dawgz® line of shears are forged from the finest authentic 440-C Japanese steel and have semi-convex edges for durability that dramatically extend blade life. Designed to allow the groomer to cut through tough mats easily and makes a rough-in more efficient. They have a Rockwell hardness of 57-58.



Available In: 7"/8"/9", Stainless, Swivel\*, Non-Swivel, Right or Left Hand

My first pair of Shark Fins were the new Dirty Dawgz. They were well worth the wait. They are the best pair of shears I own. At least until now, since I just bought 2 new pairs. I can't wait to start using them tomorrow!!! Your staff is as wonderful as your shears. I look forward to many years of working with you and your product....  
~ Lynn Lubing - Robbye's Gentle Groomer - Horsham, PA

## **GREAT WHITES...**

NEW GREAT WHITE Texture shears are forged from the finest authentic 440-C Japanese steel. Amazing for blending! Unbelievable for poodles, bichons, golden retrievers, golden doodles and all other breeds that have curly coats...for all your blending needs from breeds A to Z...eliminates all hard lines when texturizing. They have a Rockwell hardness of 57-58.



Available In: 26 tooth, Stainless, Swivel\*, Non-Swivel, Right or Left Hand

Included with every shear purchase:



**SILVER CURVED & STRAIGHT SERIES**

Want a GREAT pair of shears at an unbelievable price?? Then take a look at our SILVER line of shears...they are forged with hand-welded construction and made from the finest 440-A Japanese steel, with sharp crisp convex edges. Perfect for the new groomer!

They have a Rockwell hardness of 57-58.

Available In: 7"/8"/9", Stainless, Straight or Curved, Swivel\* or Non Swivel, Right or Left Hand

Stainless, Straight, Non-Swivel



Stainless, Straight, Swivel\*



Stainless, Curved, Non-Swivel



Stainless, Curved, Swivel\*



**Texturizer**

Available In: 50 Tooth Straight Blade, Stainless, Swivel\* or Non Swivel, Right or Left Hand

Non-Swivel, 50 Tooth, Stainless, Non-Swivel



Swivel, 50 Tooth, Stainless, Swivel\*



These are the best shears I've ever used. I bought 2 pairs of the curved and was told I wouldn't be able to turn them over and use them backwards. Well I tried anyway & guess what? They work for me since I have little hands so I am able to get the angles I need.  
~ Suellen Cowley, Azzur Grooming

Love using these shears! They feel so good and comfortable in your hands. I do notice less stress on my wrist.  
~ Crystal Foschia, All About Dogs

Hello Randy, I LOVE my shears! I want more! I adjusted to them in an hour! Don't want to use anything else ever! Love them! Was skeptical at first, now I can't do without!!!  
~ Barbara & Neil Katz, Barkin Beauties Mobile Grooming

Included with every shear purchase:



**GOLD STRAIGHT SERIES**

Made from the finest authentic 440-A steel from the Hitachi factory in Japan, you can expect extremely sharp convex edges...  
Great for all coats, long and straight, short and curly  
These shears are lightweight, yet extremely durable.  
They have a Rockwell hardness of 58-59.

Available In: 7"/8"/9", Stainless, Rainbow or Pink Titanium, Swivel or Non Swivel

Stainless, Straight, Non-Swivel



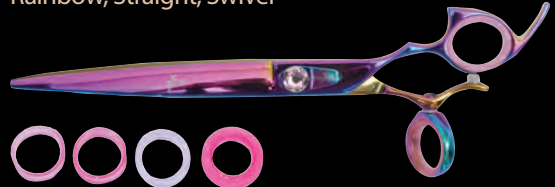
Stainless, Straight, Swivel\*



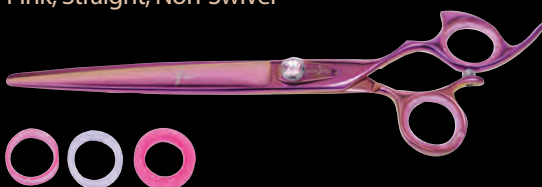
Rainbow, Straight, Non-Swivel



Rainbow, Straight, Swivel\*



Pink, Straight, Non-Swivel



Pink, Straight, Swivel\*



I ordered a silver line 8 inch straight shear but they called me to let me know they didn't have it in stock but then they offered to upgrade me to the gold line instead for no extra charge i was like wow and i got it the next day... SHARK FIN CUSTOMER SERVICE IS THE BEST I EVER HAD!  
~ Danny Ruela

Included with every shear purchase:



**Texturizer**

Available In: 50 Tooth, Stainless, Swivel\* and Non Swivel, Right and Left Hand





**GOLD CURVED SERIES**

Available In: 7"/8"/9", Stainless, Rainbow or Pink Titanium, Swivel\* or Non Swivel

Stainless, Curved, Non-Swivel



Stainless, Curved, Swivel\*



Rainbow, Curved, Non-Swivel



Rainbow, Curved, Swivel\*



Pink, Curved, Non-Swivel



Pink, Curved, Swivel\*



I LOVE my Shark Fin Shears! Would not trade them for the world. After working for 20 years with other shears, I couldn't believe the world of difference they make in my work. KUDOS!  
~ Beth Dysinger - Paws N Effect Small Dog Grooming - New Milford, New Jersey

Shark Fins were my first pair of swivels. I have the silver line right handed rainbow curves. I am in love with them. I have noticed a significant decrease in the amount of pain that runs through my wrist on a day to day basis. A favorite feature of mine is the quality of the shear. I have had this pair for a year and a half and have never had to send them in for sharpening and they are still so sharp! Thank you so much for making such a high quality shear at a reasonable price. You have gained a loyal customer for life!  
~ Danielle DeWitt - New Palestine, IN

Back in February I purchased my first pair of Shark Fin shears at the Groom Expo in Pasadena. I chose 8" Gold Line curved shears. In hindsight, I should have bought more than one pair. I wasn't sure how I would like the swivel thumb but those have become the only shears I want to use. I love the swivel thumb! No more twisting and contorting my wrist to get the right angle. I had no problem getting used to the swivel, it just seemed to come naturally. I want to thank the sales rep for spending so much time with me at the Expo. I will definitely be back to buy at least a couple more pairs of SharkFin shears! Thanks :)  
~ Cindi

Included with every shear purchase:



PLATINUM STRAIGHT SERIES

Our platinum shears are made from the finest authentic 440c steel from the Hitachi factory in Japan. These shears will glide through tough coats easily and will stay sharper longer cut after cut, with razor sharp edges for crisp clean lines. They have a Rockwell hardness of 59-60.

Available In: 7"/8"/9", Stainless, Rainbow or Pink Titanium, Swivel\* or Non Swivel

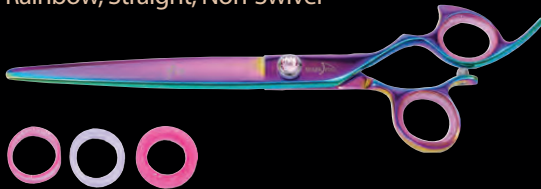
Stainless, Straight, Non-Swivel



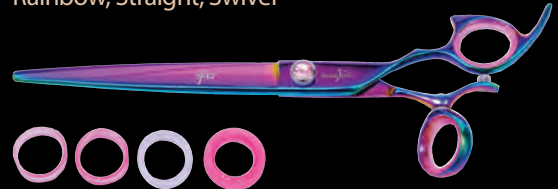
Stainless, Straight, Swivel\*



Rainbow, Straight, Non-Swivel



Rainbow, Straight, Swivel\*



Pink, Straight, Non-Swivel



Pink, Straight, Swivel\*



I love them!! I didn't think I was going to at first because it seemed that I wasn't using them correctly, but I loved the cut. After continuing to use them everything comes naturally. I just ordered my second pair. They are so comfortable in your hand and the cut is wonderful.  
~ Trudy VanArsdale, Dog Gone Classy

Included with every shear purchase:



**Texturizer**

Available In: 50 Tooth, Stainless, Swivel\* or Non Swivel, Right or Left Hand



Available In: 7"/8"/9", Stainless, Rainbow or Pink Titanium, Swivel\* or Non Swivel

Stainless, Curved, Non-Swivel



Stainless, Curved, Swivel\*



Rainbow, Curved, Non-Swivel



Rainbow, Curved, Swivel\*



Pink, Curved, Non-Swivel



Pink, Curved, Swivel\*



PLATINUM CURVED SERIES

Dear Shark Fin,

My name is Huber Pineda, I am the 2009 "Animal Planet's Groomer of the Year" and I just wanted to let you guys know how much I love and appreciate your product. Last year I saw your booth at the Pasadena show here in California, I was curious and intrigued by the looks of your shears, I came to be fitted and for some reason I just dismissed it as being just a weird looking pair of shears, it felt "different" in my hand and I just thought to myself "Great idea... but not for me".

I have been suffering from tennis elbow and the pain in my right wrist has been getting worse and worse, I've tried acupuncture, massage, hot wax treatments and inevitably I had to bite the bullet and get the horribly painful cortisone shots, anyone who has endured the process will tell you how painful it is. I had made peace with the idea that I will have to endure the procedure every so often in order to keep myself from taking industrial amounts of Aleve... to be honest with you, I dread taking all kinds of pills and shots in my body.

I had the luck of meeting Randy Ferman who generously gave me a pair of shears and told me to just give it some time and to play with them, if I didn't like them... well, I just had to send them back and no harm done. Well... I did as I was told, I gave them some use, played with them and got used to them, to me, it didn't come easy, I have to admit it took 2 to 3 weeks to really feel comfortable using them.

Needless to say... it's been some time since then and I am just at a loss of words! (trust me... it doesn't happen that often!) Since then, I haven't had to visit my Doctor for more cortisone shots, I still visit the acupuncturist but not for the pain in my wrist, elbow or shoulder... I do it because I love to relax and enjoy the treatment, I don't have to go there in pain looking for relief!!! When people ask me what kind of shears I use... guess what my answer is? Thanks for such a wonderful product, I will forever be grateful.

Your Dear Friend,  
Huber Pineda, Animal Planet's Groomer of the Year 2009

Included with  
every shear purchase:





## ***We love our lefties...***

We are proud to be the ONLY shear company in the world to offer a full line of left handed shears in all models!

### **LEFTIES AVAILABLE IN ALL LINES!**

SILVER, GOLD, and PLATINUM lines available in: 7"/8"/9" in Stainless, Swivel or Non-Swivel, Straight or Curved  
DIRTY DAWGZ and DOUBLE SHARK MEDALIST available in: 7"/8"/9" in Stainless, Swivel or Non-Swivel



Included with every shear purchase:



Texturizer available in SILVER, GOLD and PLATINUM LINES  
Swivel\* or Non-Swivel

**LEFTY**

**SUPER SWIVEL**

Take the next step in ultimate comfort and performance with our new SUPER SWIVEL! The double swivel thumb combined with our patented Shark Fin® handle and patented Shear Fit™ Finger Fitting System allows for even greater freedom of movement for unmatched control and comfort. They are the most technologically advanced shears in the world!

Available In: 7"/8"/9"

**Silver Line, Straight**  
also available in pink and rainbow



**Silver Line, Curved**  
also available in pink and rainbow



**Gold Line, Straight**  
also available in pink and rainbow



**Gold Line, Curved**  
also available in pink and rainbow



**Platinum Line, Straight**  
also available in pink and rainbow



**Platinum Line, Curved**  
also available in pink and rainbow



**Dirty Dawgz Line, Straight**



**Medalist Line**



**Great White Line**



LOVE my Shark Fins - they're all I use.  
~Frances Brannon

Included with  
every shear purchase:

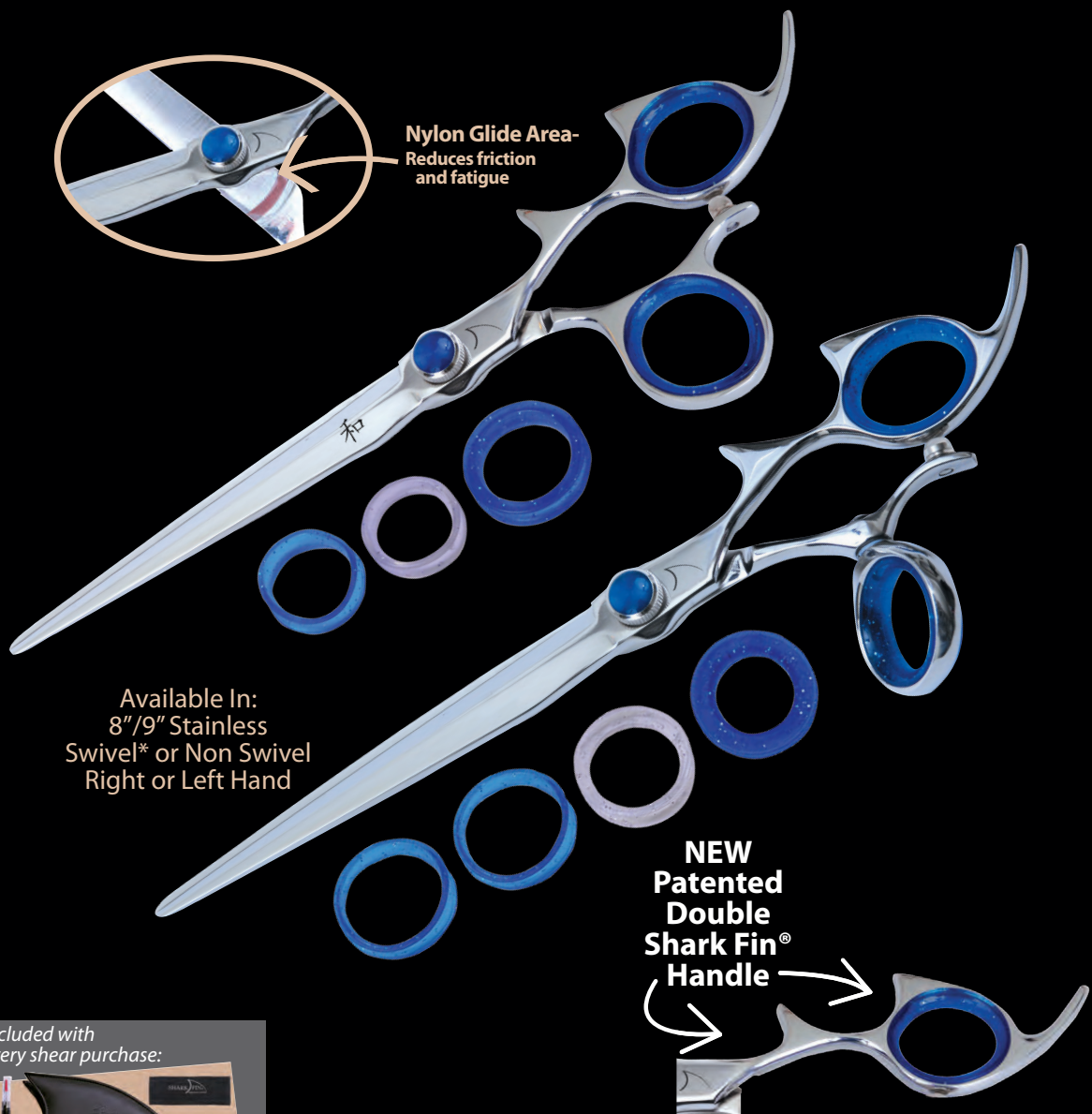




**DOUBLE SHARK MEDALIST**

**NEW from Shark Fin®! The DOUBLE SHARK MEDALIST**

Step into the spotlight with our NEW COMPETITION grooming shear! The Double Shark Medalist features cobalt enhanced blades with nylon glide strips at the back of the blades for significant friction reduction. Made from the finest authentic VG-10 Japanese Steel from the Hitachi factory for unmatched razor sharp edges. This shear also has a ball bearing system in the pivot and swivel area for unmatched smoothness and comfort. They have a Rockwell hardness of 61-63.



Available In:  
8"/9" Stainless  
Swivel\* or Non Swivel  
Right or Left Hand

Included with  
every shear purchase:



## Shark Fin® Student Kits

The only patented shear in the world that will start the student out with proper scissor form which will allow them to learn quicker. Only our patented Shark Fin® handle aligns the nerves and tendons in the students hand, and can help to reduce and may even eliminate the risk of getting carpal tunnel syndrome, nerve damage and other health related issues caused by improperly fitted shears. Our student kits, also come with our patented finger fitting system, so that each shear is custom fitted to the student's own ring finger and thumb diameter for perfect control, comfort and relaxed grip.

### DELUXE KIT INCLUDES:

- 2 cutting 7", 8" or 9" forged hand welded handles to blades non-swivel and swivel, you choose, 440-A Japanese steel, 1 straight, 1 curved cutting shear with full convex edges for sharp clean crisp cuts.
- 1, 50 tooth forged hand welded handles to blades non-swivel and swivel, you choose, 440-A Japanese steel straight thinning shear with full convex edges for sharp clean crisp cuts.
- Lubricating oil pen and bandages
- Three sets of Shear Fit™ Finger Fitting System
- Simulated leather pouch
- Instructional DVD



### FULLY CUSTOMIZABLE!

Each student kit is available with your choice of:  
7", 8" or 9" straight or curved  
in a swivel or non-swivel thumb.

**Our Student Kits start students off with proper scissor form right from the start. Properly fitted shears make the instructor's job easier and helps students learn faster.**

## Shear Case



## Accessories



Shear Fit™ Finger Fitting System - 15 Inserts



Leather Polishing Cloth



Lubricating Oil Pen

# ACCESSORIES & LEGEND

### Patented SHEAR FIT™ Finger Fitting System



Our Shear Fit™ finger fitting system allows the groomer to fit the shear to their exact thumb and ring finger diameter by adding or removing special ring guards. All Shark Fin® shears come with 4-6 different guard sizes for a custom fit.

### Rockwell Hardness (RH) Key

Rockwell Hardness testing is a method of measuring the hardness of materials and resistance to indentation. The higher the number - the harder the material which means the blades stay sharper longer and are more durable. Our shears have a Rockwell Hardness in the range of 57-63.

- Dirty Dawgz® Line: RH 57-58
- Silver Line: RH 57-58
- Great White Line: RH 57-58
- Gold Line: RH 58-59
- Platinum Line: RH 59-60
- Double Shark Medalist Line: RH 61-63

### Swivel Action and Benefits



Swivel action illustrates how a groomer is able to drop their elbow and shoulder and straighten out their wrist. The benefit of using a swivel shear is the ultimate in performance, comfort and control.

### Forged vs. Cast

**CAST:** A metal-forming process whereby molten metal is poured into a mold. It is a less expensive way to produce the part. A cast shear is very brittle, so if the shear is dropped, it can shatter or bend and cannot be bent back to its original shape.

**FORGED:** A process of using heat and working metal to a finished shape by hammering or pressing. The forging process makes a much more durable shear. It can be repaired easier if dropped, unlike a cast shear.

**FORGED WITH HAND WELDED HANDLES AND BLADES:** The same forging process is used, but normally the blades are made with a harder metal than the handles. The handles and blades are welded together so that the shears can be repaired if dropped or damaged more easily and brought back to factory specifications by a certified technician.

With every Shark Fin® shear the blades and handles are made separately and then hand-welded together to ensure excellent balance, great control and proper blade alignment.