



Want a GREAT pair of shears at an unbelievable price??
Then take a look at our STANDARD line of shears.
They are forged with hand-welded construction and made from
the finest Japanese-440-A steel, with sharp crisp convex edges.
Perfect for the new stylist! They have a Rockwell hardness of 55-56.

Available In: 5.5" / 6.25" , Right and Left Handed



Stainless

Available In: 5.5" / 6.25" , Right and Left Handed



Stainless*

Texturizer

Available In: Right and Left Handed



15T Stainless



28T Stainless

Our texture shears come in a wide variety of styles including chunking, texturizing, thinning and blending. They are whisper quiet and silky smooth and are thoroughly tested for crisp clean cuts without folding or bending the hair.



40T Stainless

Included with every
shear purchase:



Shear Fit™
Finger Fitting System



STANDARD LINE

Made from the finest 440-A steel from the Hitachi factory in Japan, you can expect extremely sharp convex edges . . . GREAT for all hair cutting techniques including slide and point cutting. These shears will provide smooth effortless cuts and are extremely durable.

They have a Rockwell hardness of 57-58.

Available In: 5.0" / 5.5" / 6.25" / 7.0", Swivel* and Non-Swivel,



Texturizer

Our texture shears come in a wide variety of styles including chunking, texturizing, thinning and blending. They are whisper quiet and silky smooth and are thoroughly tested for crisp clean cuts without folding or bending the hair.

Swivel* and Non-Swivel,

7T Chunking



15T Texturizing*



28T Thinning



40T Blending*



"The Shark Fin shear that I purchased has been heaven sent. I've been a stylist for 12 years and these are the best shears I've ever used. My haircuts are more precise and the design of the shears has helped my carpal tunnel syndrome tremendously. Also, the customer service is outstanding.

Thanks so much!"

- Melissa Melville, Hair Dimensions, Jacksonville, NC

Included with every shear purchase:



PROFESSIONAL LINE STAINLESS

PROFESSIONAL LINE TITANIUM

Made from the finest 440-A steel from the Hitachi factory in Japan, you can expect extremely sharp convex edges for smooth effortless cuts from our PROFESSIONAL line. These shears are extremely durable. They have a Rockwell hardness of 57-58.

Blue, Pink, Black and Purple Available In: 5.5" / 6.25", Swivel* and Non-Swivel



Blue*



Pink



Black



Purple*



Rainbow Available In: 5.0" / 5.5" / 6.25" / 7.0", Swivel* and Non-Swivel, Right and Left Hand

Rainbow*



Included with every shear purchase:



Shear Fit™
Finger Fitting System



Texturizer

Our texture shears come in a wide variety of styles including chunking, texturizing, thinning and blending. They are whisper quiet and silky smooth and are thoroughly tested for crisp clean cuts without folding or bending the hair.

Available In: Rainbow Only, Swivel* and Non-Swivel, Right and Left Handed

7T Chunking*



*For All Your
Texturizing
Needs!*

15T Texturizing



28T Thinning*



40T Blending



"Thank you for your wonderful shears. I am able to work again! I have been a hair stylist for over 30 years and cutting caused such cramps, numbness and pain that ran all the way up to my elbow, that I had to stop working. I saw your ad and ordered the swivel 5.5" rainbow. What a difference. My hand does not cramp and the tingles are gone. After using your shears, I find I can not use my old ones anymore. Just trying to cut with them causes cramps almost immediately. Again, thanks for a great product!"

Best Regards,
Anne Pelicano, Studio Anne LLC, Frederick, MD

Included with every
shear purchase:



PROFESSIONAL LINE TITANIUM

Made from the finest 440-A steel from the Hitachi factory in Japan, you can expect extremely sharp convex edges for smooth effortless cuts from our PROFESSIONAL line. These shears are extremely durable. They have a Rockwell hardness of 57-58.

Available In: 5.0" / 5.5" / 6.25" / 7.0", Rainbow and Stainless, Swivel* and Non-Swivel



Stainless



Rainbow*

Texturizer

Available In: Swivel* and Non-Swivel



7T Chunking*



15T Texturizing*



28T Thinning* *



40T Blending

Included with every shear purchase:



Shear Fit™
Finger Fitting System

Our texture shears come in a wide variety of styles including chunking, texturizing, thinning and blending. They are whisper quiet and silky smooth and are thoroughly tested for crisp clean cuts without folding or bending the hair.

PROFESSIONAL LINE LEFTY

Take the next step in ultimate comfort and performance with our new SUPER SWIVEL! The double swivel thumb combined with our patented Shark Fin® handle and patented Shear Fit™ finger fitting system, allows for even greater freedom of movement for unmatched control and comfort. They are the most technologically advanced shears in the world! With 440-A steel made from the Hitachi factory in Japan, you can expect extremely sharp convex edges. They have a Rockwell hardness of 57-58.



SPECIALTY SHEAR SETS



Available In: 5.0" / 5.5" / 6.25" / 7.0", Rainbow and Stainless, Right and Left Handed

Contribute to the cause with this Special Edition Shark Fin BCA Kit! Kit includes: Shark Fin Swivel or Non Swivel Cutting Shear, Shark Fin Non Swivel Texturizing Shear, Special Edition Pink Shark Fin Razor, Special Edition Pink Shear Case, Polishing Cloth, 2 Shear Fit Packages and Shear Oil Pen. Shark Fin will make a donation to Breast Cancer Awareness. Available in left or right handed.



Our Double Shark Fin® has been designed for the stylist who wants maximum contact with the shear for unmatched control and comfort. Made from VG-10, one of the hardest steels available from the Hitachi factory in Japan. These shears also have ball bearings in the pivot area and swivel thumb for effortless movement of the shear with sharp convex edges, which translates to soft smooth cuts and unmatched technology at a GREAT price. They have a Rockwell hardness of 59-60.

Available In: 5.5" / 6.25" / 7", Stainless Only, Swivel*, Non-Swivel and Super Swivel*, Right and Left Hand

**NEW
Patented
Double
Shark Fin®
Handle**



Included with every
shear purchase:



Shear Fit™
Finger Fitting System



DOUBLE SHARK FIN

100% HANDMADE...Trained in Japan, our craftsman only use the finest Hitachi ATS-314 Japanese steel to ensure unmatched razor sharp convex edges. You won't even feel the blades as they slide effortlessly through the hair and they are 30% lighter than conventional shears. These shears come with a ball bearing system in the pivot area and swivel thumb. We have added nylon glide strips at the back of the blades for additional friction reduction. They have a Rockwell hardness of 62-63.

Available In: 5.5" / 6.25" / 7", Stainless Only, Swivel*, Non-Swivel and Super Swivel*, Right and Left Hand



Included with every
shear purchase:



Shark Fin Student Kits

The only patented shear in the world that will start your students out with proper scissor form which allows them to learn quicker. Only our patented Shark Fin® handle aligns the nerves and tendons in the student's hand, and can help reduce and may even eliminate the risk of carpal tunnel syndrome, nerve damage and other health related issues caused by improperly fitted shears.

Only our student kits come with a patented finger fitting system, so that each shear is custom fitted to the student's own ring finger and thumb diameter for perfect control, comfort and a relaxed grip.



STANDARD KIT INCLUDES:

- 5.5" forged, hand welded 440-A Japanese steel cutting shear with convex edge
- 28 tooth forged, hand welded 440-A Japanese steel thinning shear with convex edge
- Lubricating oil pen and bandages
- Two sets of Shear Fit™ finger fitting system
- Simulated trifold leather pouch
- Instructional DVD

Both the Deluxe Kit and Standard Kit are available with your school logo and name at no additional charge. Minimum quantity applies.

Only our Student Kits start students off with proper scissor form right from the start. Properly fitted shears make the instructor's job easier and helps students learn faster.

"I didn't think you could teach an old dog new tricks, but you did! The shears are great, the way they feel in your hand is wonderful. No more hurting in your shoulder or neck. I didn't know that the way I was cutting hair was hurting me but I could feel the pain. Looking forward to NO MORE PAIN!!! Can't wait to get my students using Shark Fin shears. They loved the way mine feel."
Connie Watson, CC's Cosmetology College

Give Your Students The Right Fit

See how other schools have found the right fit with our patented Shear Fit™ finger fitting system.



DELUXE STUDENT KIT

Offers students the ultimate in control, performance and comfort



DELUXE KIT INCLUDES:

- 5.5" forged, hand welded 440-A Japanese steel cutting shear with convex edge
- 28 tooth forged, hand welded 440-A Japanese steel thinning shear with convex edge
- Mannequin shear with convex edge
- Mannequin 28 tooth thinning shear with convex edge
- Shark Fin razor with feather blade
- Lubricating oil pen and bandages
- Two six inch combs (not pictured)
- Five sets of Shear Fit™ finger fitting system for all shears and razor
- Simulated leather pouch
- Instructional DVD

All SHARK-FIN® Shears come with our patented handle and Shear Fit™ finger fitting system allowing the student to custom fit the shear to their exact ring finger and thumb diameter, for a relaxed grip and superior control.

Introducing The All New Standard and Deluxe Barber Sets From Shark Fin Shears



STANDARD BARBER SET

STANDARD BARBER KIT INCLUDES:

(1) 6.25 inch or 7 inch forged, hand welded 440A Japanese steel cutting shear with convex edge • (1) 50-tooth forged, hand welded 440-A Japanese steel thinning shear with convex edge • Lubricating oil pen and bandages • Two sets of Shear Fit™ finger fitting system • Simulated trifold leather pouch • Instructional DVD

Deluxe Barber Set



DELUXE BARBER SET

Both the Deluxe and Standard Kits
are **available in left and right** hand models.

DELUXE BARBER KIT INCLUDES:

(1) cutting 7", (1) 6.25" cutting shear and (1) 50 tooth blending shear with forged hand welded handles to blades 440-A Japanese steel, with full convex edges for sharp, clean, crisp cuts • Set also includes: Three sets of Shear Fit Finger Fitting System • Shark Fin poly Razor with feather blade • Two six inch combs Lubricating oil pen and bandages • Black Polishing Cloth • Simulated leather pouch • Instructional DVD

Lefty Standard Student Kit

We love our lefty's...We are proud to be the ONLY shear company in the world to offer a full line of left handed shears in all models!



Both the Deluxe Kit and Standard Kit are available with your school logo and name at no additional charge. Minimum quantity applies.

Lefty Deluxe Student Kit



All SHARK-FIN® Shears come with our patented handle and Shear Fit™ finger fitting system allowing the student to custom fit the shear to their exact ring and thumb diameter, for a relaxed grip and superior control.

LEFTY STUDENT KITS

Lefty Standard Barber Set



Complete kit details on page 13

Lefty Deluxe Barber Set



LEFTY BARBER SETS

Shear Case



Also available
in Pink

Shark Fin® Case - Black
Holds two shears



Tri-Fold
Leatherette Pouch
Holds two shears



Black
Leatherette Pouch
Holds one shear

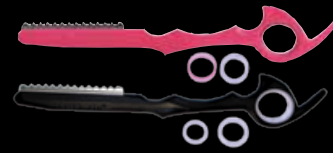


Shear Fit™ Finger
Fitting System - 15 Inserts

Accessories



Leather Polishing Cloth



Shark Fin® Razor with Feather Blade



Lubricating Oil Pen

ACCESSORIES & LEGEND

Patented SHEAR FIT™ Finger Fitting System



LEGEND

Our Shear Fit™ finger fitting system allows the stylist to fit the shear to their exact thumb and ring finger diameter by adding or removing special ring guards. All Shark Fin® shears come with 4-6 different guard sizes for a custom fit.

Rockwell Hardness (RH) Key

Rockwell Hardness testing is a method of measuring the hardness of materials and resistance to indentation. The higher the number - the harder the material which means the blades stay sharper longer and are more durable. Our shears have a Rockwell Hardness in the range of 55-63.

- Standard Line: RH 55-56
- Professional Line: RH 57-58
- Professional Titanium Line: RH 57-58
- Professional Lefty Line: RH 57-58
- Professional Super Swivel Line: RH 57-58
- Double Shark Fin® Line: RH 59-60
- Monarch Line: RH 62-63

Swivel Action and Benefits



Swivel action illustrates how a stylist is able to drop their elbow and shoulder and straighten out their wrist. The benefit of using a swivel shear is the ultimate in performance, comfort and control.

Forged vs. Cast

CAST: A metal-forming process whereby molten metal is poured into a mold. It is a less expensive way to produce the part. A cast shear is very brittle, so if the shear is dropped, it can shatter or bend and cannot be bent back to its original shape.

FORGED: A process of using heat and working metal to a finished shape by hammering or pressing. The forging process makes a much more durable shear. It can be repaired easier if dropped, unlike a cast shear.

FORGED WITH HAND WELDED HANDLES AND BLADES: The same forging process is used, but normally the blades are made with a harder metal than the handles. The handles and blades are welded together so that the shears can be repaired if dropped or damaged more easily and brought back to factory specifications by a certified technician.

With every Shark Fin® shear the blades and handles are made separately and then hand-welded together to ensure excellent balance, great control and proper blade alignment.